

## 5.4 Note for the application development using Visual C++

### (1) Header files necessary to include

Please include the following header files when using the PA-library and Visual C++ (Ver. 2005) for application development: (same in case using MFC)

pa.h ..... Describing PA-library prototype declaration

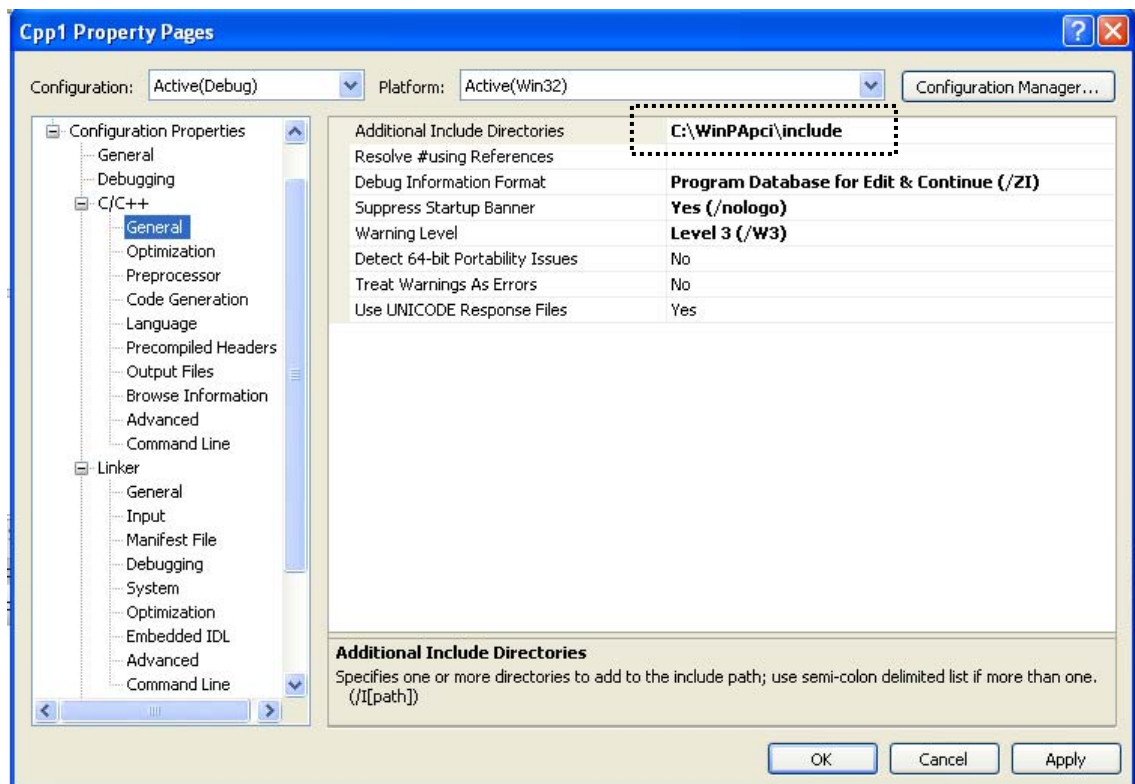
paerr.h ..... Describing error messages corresponding PA-library error codes

<setting> select on the menu bar project -> Properties...

select General of C/C++

set the path of PA-library header files on Additional Include Directories

(factory default is c:\WinPapi\include)



## (2) Library files necessary to link

Please link the following library files only when using the PA-library and Visual C++ (Ver. 2005) for application development:

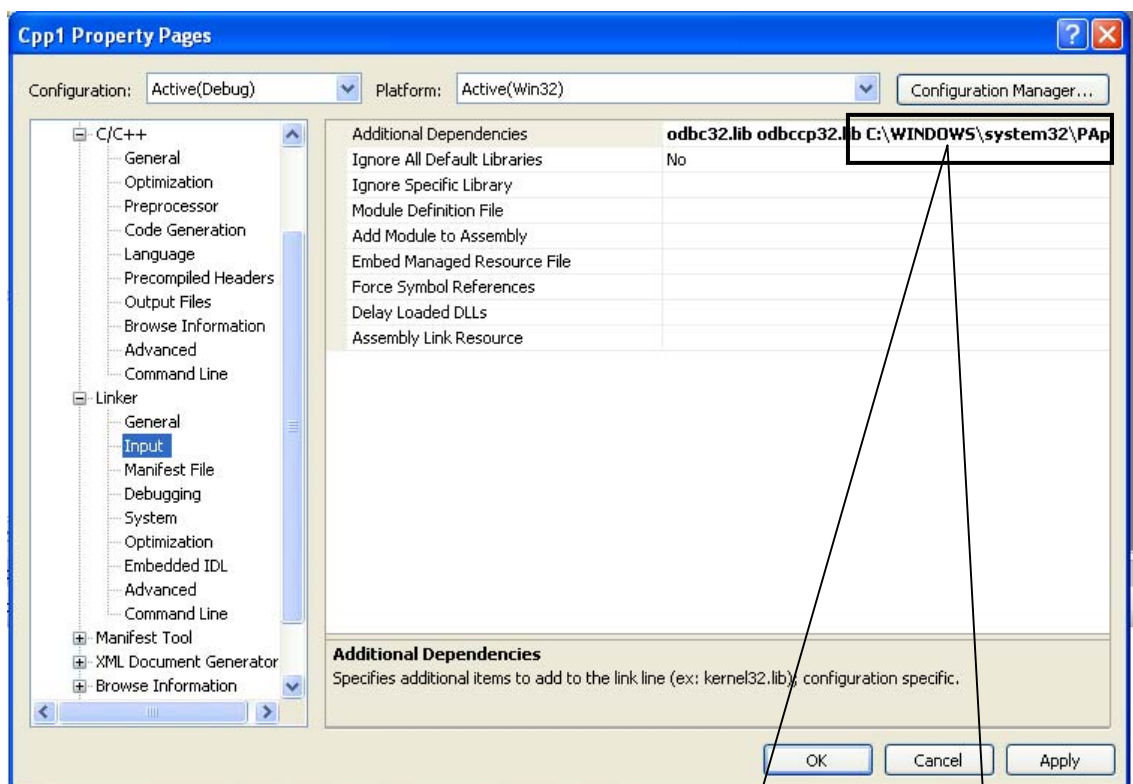
Papci.lib ... Import library files including PA-library

<setting> select on the menu bar project -> [Filename]Properties...

select Input of Linker

set the name of PA-library library modules

(factory default is c:\WinPapi\include)



Windows2000 or NT: C:\winnt\system32\PApci.lib

Windows XP: C:\windows\system32\PApci.lib

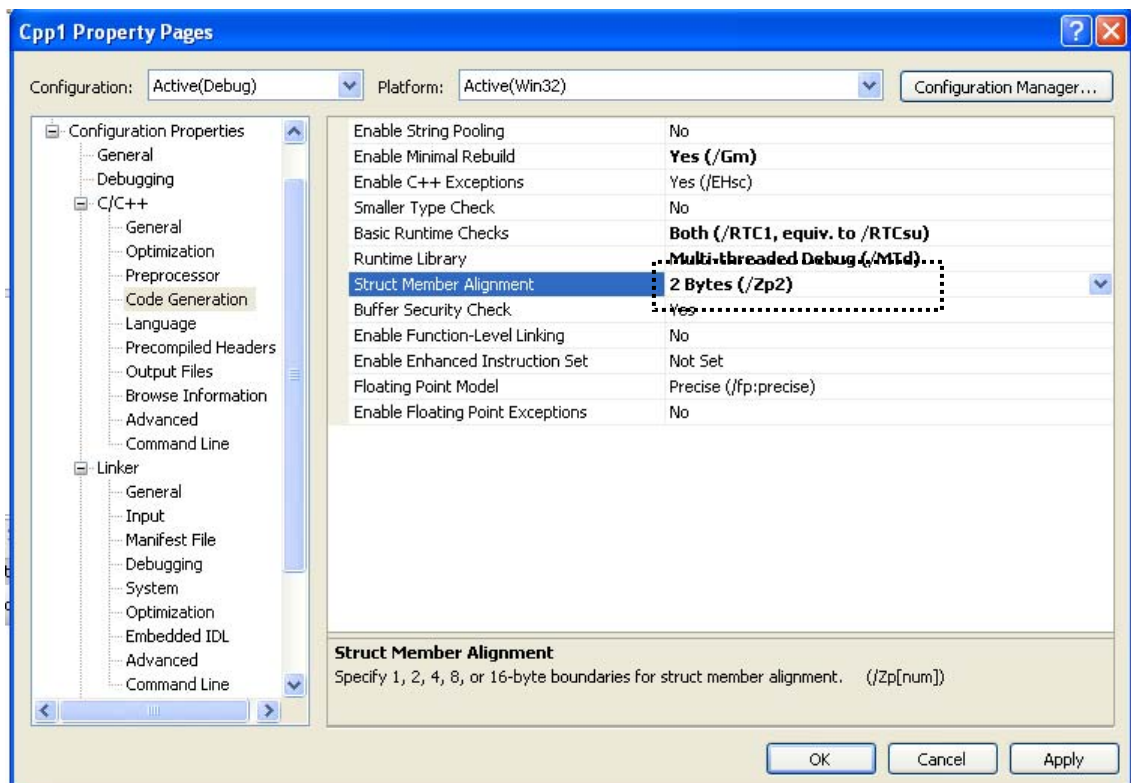
### (3) Structure Member Alignment

Please change the structure member alignment from default 8 byte to 2 byte

<setting> select on the menu bar project -> [Filename]Properties...

select Code Generation of C/C++

set the value 2 Bytes(/Zp2) on the Struct member alignment



### (4) DLL files necessary for Program execution

For execution of the program, the DLL file must be on the correct path (Windows2000 or NT: C:\winnt\system32\PApci.lib Windows XP: C:\windows\system32\PApci.lib)

Papci.lib ... PA-library execution module

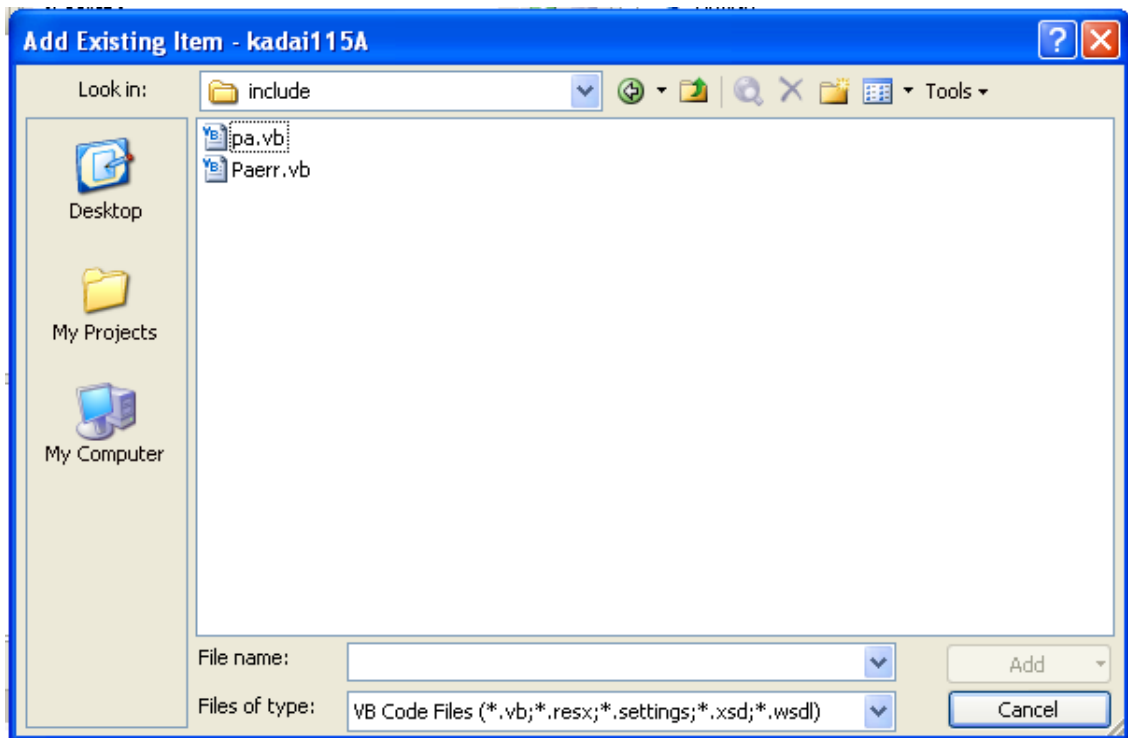
## 5.5 Note for the application development using Visual Basic

### (1) Header files necessary to include

Please add the following header files (standard module file) on the project when using the PA-library and Visual Basic(Ver. 2005) for application development:

pa.vb ..... Describing PA-library prototype declaration necessary for calling the C language  
PA-library from the Basic program

<setting> select on the menu bar project -> Add Existing Item...  
add pa.vb



### (2) DLL files necessary for Program execution

For execution of the program, the DLL file must be on the correct path (Windows2000 or NT:  
C:\winnt\system32\PApci.lib Windows XP: C:\windows\system32\PApci.lib)

Papci.lib ... PA-library execution module