

# 7<sup>th</sup> International Abilympics

## Vocational Skills Contest

### V10. Dress Making - Advanced Course

#### 1. Task

Produce an over blouse without lining as illustrated below using the provided materials.

#### 2. Allocated Time

Maximum time - 6 hours

#### 3. Instructions

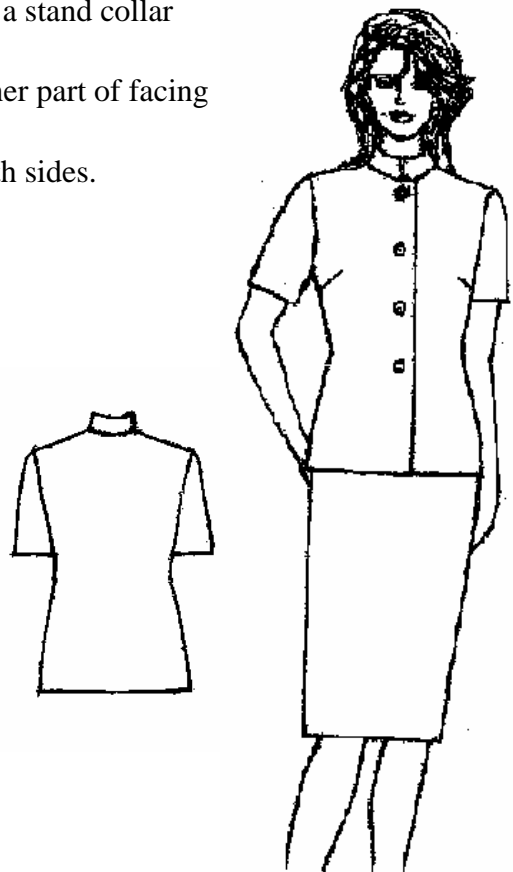
- Paper patterns will be provided.
- Contestants are not allowed to lend or borrow materials, tools, etc., during the contest.
- Each contestant is responsible for adjusting their sewing machine.
- Matters other than designated in 4. below may be done at the discretion of each contestant.
- Contestants shall notify the judge when they finish the task.

#### 4. Specifications

- The over blouse shall be front opening and have a stand collar and short sleeves.
- Shoulder, side, underarm, armhole, hem, and inner part of facing must be finished with lockstitch.
- Collar must be attached with the facing from both sides.
- Buttonhole must be hand-worked.

#### 5. Materials to be provided on site

- Outer material: Light woolen cloth (roughly cut)
- Interlining: Adhesive interlining (roughly cut)
- Adhesive tape: bias tape: 1.5m
- Threads:
  - Silk sewing machine thread x 2
  - Silk hand sewing thread x 1
  - Silk buttonhole thread x 1
  - Lock stitch sewing machine spun thread x 3
- Buttons: 4 pieces (2.0cm)
- Shoulder pads: one pair



## 6. Equipment and Tools to be prepared on site

Item		Standard	Qty	Remarks
Equipment	Working table		1	
	Sewing machine	Industrial	1	
	Overlock machine		1	
	Bobbin & bobbin case		1 pair	
	Sewing-machine needles	No.11	2	One each for sewing machine and overlock machine
	Hanger		1	
Tools	Steam iron		1	
	Finish tools	Tailor's ham, small donkey, press ball	1 set	
	Sheet/Pressing board		1	
	Filler cloth		1	

(Note) Qty is the number for one contestant.

## 7. Items to be brought by each contestant

Item	Remarks
Scissors	
Hand sewing equipment	Needles, marking pins, pincushion, thimbles, basting thread
Ruler(s)	Straight ruler, curved ruler, measure tape, etc.
Eyeleteer	
Tweezers	
Chalk	Triangle, pencil-type, or other
Chisel	Buttonhole cutter
Stitch ruler	If necessary

(Note) Contestants who wish to bring their own tools other than specified above are requested to prepare a list of such tools and present it to the organizer for approval in advance. The organizer reserves the right not to allow the use of any tools that are considered to give the contestant an unfair advantage.

## 8. Evaluation Criteria

The skills of each contestant will be assessed based on the final work produced.

Items to be evaluated	Maximum marks allotted
Front waist	20
Collar	30
Sleeves	20
Overall appearance	30
Total marks	100